

PSL DIGITAL LOAD CELL

STAINLESS STEEL COMPRESSION LOAD CELL FOR WEIGHBRIDGES.

CHOOSE QUALITY

- ▼ High accuracy up to 6,000 intervals.
- ▼ Integrated in the secure PSNet network.
- ▼ IP68 / IP69K protection.
- ▼ Integrated anti-rodent cable.
- ▼ Resistant to lightning.

COMBINE MAINTENANCE AND PREVENTION

- ▼ Real-time monitoring of the behavior of each load cell making up the whole measurement channel in terms of temperature, tilt and rotation.
- ▼ Automatic detection of risky uses, sudden braking and overloads.

INSTALL YOUR MEASUREMENT CHANNEL EASILY

- ▼ Integrated anti-rotation system.
- ▼ Cable unpluggable without tools.
- ▼ Renovation of your weighbridge according to your environment and replacement of your PRECIA MOLEN measurement channel without modifying the civil works.



DOWNLOAD
THE DIGITAL
VERSION



**PRECIA
MOLEN™**
WORLDWIDE WEIGHING

PSL LOAD CELL RANGE

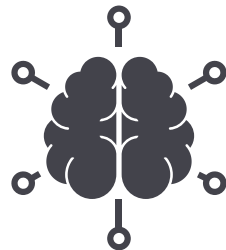
Available in 30t and 50t versions.

COMPLEMENTARY PRODUCTS

DATA ANALYSIS TOOLS



**PSNet INTELLIGENT
NETWORK**



BI PSL

A COMMITMENT TO QUALITY for reliable and certified products

The PRECIA MOLEN Group is committed to a Quality approach which applies to its products as well as its work environment.

PRECIA MOLEN aims at meeting the needs of its customers, to acknowledge the expectations of all its stakeholders and finally to ensure the sustainability of its activity.

This central approach for the company applies to and is implemented by every employee, in every stage which correspond to the activity of the Group:

- ▼ Product and service design.
- ▼ Product manufacturing and special software production.
- ▼ Sale of equipment and software.
- ▼ Maintenance and verification.



**BROWSE ALL OUR RANGES OF
PRODUCTS AND APPLICATIONS:**

HEADQUARTERS & FACTORY

BP 106 - 07001 Privas cedex FRANCE - T +33 4 75 66 46 00
pmcontact@preciamolen.com - www.preciamolen.com

RCS : AUBENAS B 386 620 165

PRECIA MOLEN RESERVES THE RIGHT TO MODIFY, AT ANY MOMENT, THE CHARACTERISTICS OF THE EQUIPMENT DESCRIBED IN THIS DOCUMENT.


**PRECIA
MOLEN™**
WORLDWIDE WEIGHING

SB011-1